

### Specifications

Models	S-80		S-85	
Measurements	Metric	US	Metric	US
Working height maximum*	26.2 m	86 ft	27.70 m	91 ft
Platform height maximum	24.38 m	80 ft	25.90 m	85 ft
Horizontal reach maximum	21.80 m	71 ft 6 in	23.32 m	76 ft 6 in
Below ground reach	1.85 m	6 ft 1 in	2.89 m	9 ft 6 in
▲ Platform length - 8 ft model	0.91 m	3 ft	0.91 m	3 ft
▲ Platform length - 6 ft model	0.76 m	2 ft 6 in	0.76 m	2 ft 6 in
▲ Platform width - 8 ft model	2.44 m	8 ft	2.44 m	8 ft
▲ Platform width - 6 ft model	1.83 m	6 ft	1.83 m	6 ft
▲ Height - stowed	2.80 m	9 ft 2 in	2.80 m	9 ft 2 in
▲ Length - stowed	11.10 m	36 ft 6 in	12.20 m	40 ft
Length - transport (jib tucked under)	—	—	11.60 m	38 ft
▲ Width	2.50 m	8 ft 2 in	2.50 m	8 ft 2 in
▲ Wheelbase	2.80 m	9 ft 4 in	2.80 m	9 ft 4 in
▲ Ground clearance - center	0.40 m	15.8 in	0.40 m	15.8 in

### Productivity

Lift capacity	227 kg	500 lbs	227 kg	500 lbs
Platform rotation	160°	160°	160°	160°
Vertical jib rotation	135° (+ 78° /- 57°)			
Turntable rotation	360° continuous		360° continuous	
Turntable tailswing	1.42 m	4 ft 8 in	1.42 m	4 ft 8 in
Drive speed - stowed	5.3 km/h	3.3 mph	5.3 km/h	3.3 mph
- raised/extended	1.0 km/h	0.65 mph	1.0 km/h	0.65 mph
Gradeability - 2WD - stowed**	30%	30%	30%	30%
- 4WD - stowed**	45%	45%	45%	45%
Turning radius - axle extended: inside	3.66 m	12 ft	3.66 m	12 ft
outside	6.55 m	21 ft 6 in	6.55 m	21 ft 6 in
Controls	12V DC proportional		12V DC proportional	
Tyres - RT foam filled	18-625, 16 ply		18-625, 16 ply	

### Power

Power source

Deutz TD2011 L04i 4 cylinder turbo diesel 74 hp (55 kW)  
Perkins 804D-33 4 cylinder diesel 63 hp (47 kW)

Auxiliary power unit	12V DC	12V DC	12V DC	12V DC
Hydraulic tank capacity	150 L	40 gal	150 L	40 gal
Fuel tank capacity - diesel	132 L	35 gal	132 L	35 gal

### Sound & Vibration Levels

Sound pressure level (ground workstation)	83 dBA	83 dBA	83 dBA	83 dBA
Sound pressure level (platform workstation)	71 dBA	71 dBA	71 dBA	71 dBA
Vibration	<2.5 m/s <sup>2</sup>	<8 ft 2 in/s <sup>2</sup>	<2.5 m/s <sup>2</sup>	<8 ft 2 in/s <sup>2</sup>

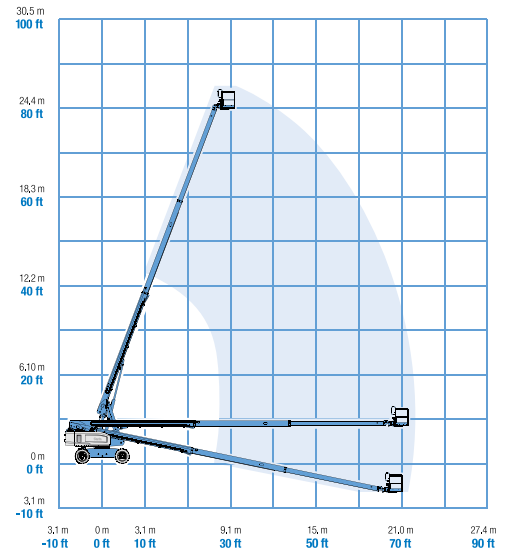
### Weight\*\*\*

2WD	16,057 kg	35,400 lbs	17,191 kg	37,900 lbs
4WD	16,102 kg	35,500 lbs	17,236 kg	38,000 lbs

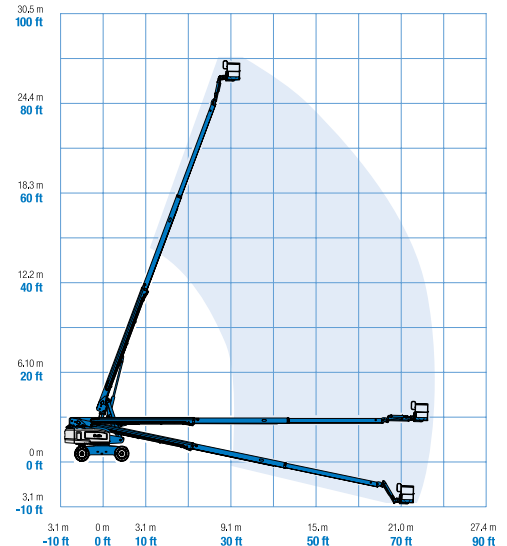
### Standards Compliance

EU Directives: 2006/42/EC - Machinery (harmonized standard EN280:2013); 2004/108/EC (EMC); 2000/14/EC (Outdoor Noise)

### Range Of Motion S-80



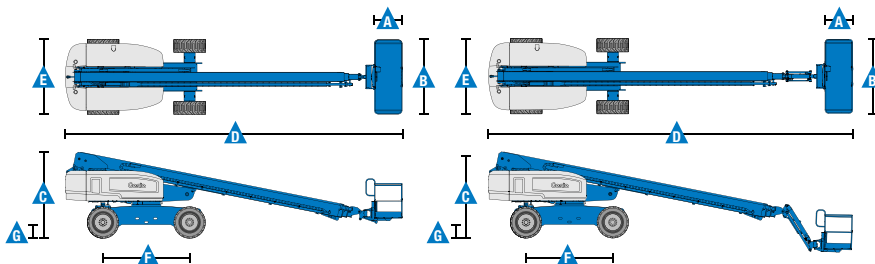
### Range Of Motion S-85



\* The metric equivalent of working height adds 2 m to platform height. U.S. adds 6 ft to platform height.

\*\* Gradeability applies to driving on slopes. See operator's manual for details regarding slope ratings.

\*\*\* Weight will vary depending on options and/or country standards.



### Features

Standard Features	Easily Configured To Meet Your Needs	Options & Accessories
<b>Measurements</b> <b>S-80</b> <ul style="list-style-type: none"> <li>26.38 m (86 ft) working height</li> <li>21.8 m (71 ft 6 in) horizontal reach</li> <li>227 kg (500 lbs) lift capacity</li> </ul> <b>S-85</b> <ul style="list-style-type: none"> <li>27.90 m (91 ft) working height</li> <li>23.32 m (76 ft 6 in) horizontal reach</li> <li>227 kg (500 lbs) lift capacity</li> </ul>	<b>Platform Options</b> <ul style="list-style-type: none"> <li>Steel 2.44 m (8 ft)</li> <li>Steel 1.83 m (6 ft)</li> <li>Steel 2.44 m (8 ft) tri-entry</li> </ul> <b>Jib Options</b> <ul style="list-style-type: none"> <li>Non-jib</li> <li>1.52 m (5 ft) articulating jib boom</li> </ul> <b>Engine Options</b> <ul style="list-style-type: none"> <li>Deutz turbocharged diesel 74 hp (55 kW)</li> <li>Perkins diesel 63 hp (47 kW)</li> </ul> <b>Drive Options</b> <ul style="list-style-type: none"> <li>2 x 4</li> <li>4 x 4</li> </ul> <b>Axle</b> <ul style="list-style-type: none"> <li>Active oscillation</li> </ul> <b>Tyre Options</b> <ul style="list-style-type: none"> <li>Rough terrain foam-filled (standard - water base)</li> <li>Rough terrain non-marking foam-filled</li> </ul>	<b>Productivity Options</b> <ul style="list-style-type: none"> <li>340 kg capacity, S-80 only <sup>(2)</sup>, includes extra counterweight</li> <li>Platform top auxiliary rail</li> <li>Weld leads to platform <sup>(2)</sup></li> <li>Air line to platform <sup>(2), (5)</sup></li> <li>Power to platform (incl. plug, socket and ground fault interrupt leakage on request)</li> <li>Work lights package (2 on chassis, 2 on platform)</li> <li>Dual axis joystick steering</li> <li>Hydraulic oil cooler</li> <li>Biodegradable hydraulic oil <sup>(2)</sup></li> <li>Hostile environment kit <sup>(2)</sup>: cylinder bellows, boom wiper seals, platform and ground control box cover</li> <li>Deluxe hostile environment kit <sup>(2,3)</sup>: adds to basic kit ring gear guard, cable track hose cover and air pre-cleaner</li> <li>Aircraft protection kit <sup>(1,3)</sup>: platform foam padding and padded disable system</li> <li>Tilt cut-out option</li> <li>Track &amp; Trace <sup>(4)</sup> (GPS unit providing machine location &amp; operating information)</li> <li>Lockable platform &amp; ground control box covers</li> <li>Tow package <sup>(2)</sup></li> <li>Tool tray</li> <li>Operator Protective Structure</li> <li>Operator Protective Alarm</li> <li>Keypad unlocking device</li> </ul> <b>Power Options</b> <ul style="list-style-type: none"> <li>Engine gauge package <sup>(2)</sup>: oil pressure, temp &amp; amp</li> <li>AC generator packages (110V/-220V/50Hz, 3000W) <sup>(2)</sup></li> <li>Deutz v-belt generator kit (110V/220V) <sup>(3)</sup></li> <li>Diesel air intake pre-cleaner <sup>(2)</sup></li> <li>Diesel catalytic scrubber muffler</li> <li>Low temperature cut-out module</li> <li>Engine heater <sup>(3)</sup></li> <li>Refinery kit with spark arrestor and electric or mechanical Chelwyn valve <sup>(3)</sup></li> </ul>



<sup>(1)</sup> Not available on tri-entry platforms  
<sup>(2)</sup> Factory-fit option only  
<sup>(3)</sup> Available on selected models only. See your Genie representative for further information.  
<sup>(4)</sup> Includes a first 2 years subscription  
<sup>(5)</sup> Air line to platform not compatible with Weld leads to platform