

Specifications

Models	SX-105 XC		SX-125 XC	
Measurements	Metric	US	Metric	US
Working height maximum*	34.00 m	111 ft	40.10 m	131 ft
Platform height maximum	32.00 m	105 ft	38.10 m	125 ft
Horizontal reach maximum	24.38 m	80 ft	24.38 m	80 ft
Below ground reach	2.69 m	8 ft 10 in	2.69 m	8 ft 10 in
A Platform length - 8 ft model	0.91 m	3 ft	0.91 m	3 ft
Platform length - 6 ft model	0.76 m	2 ft 6 in	0.76 m	2 ft 6 in
B Platform width - 8 ft model	2.44 m	8 ft	2.44 m	8 ft
Platform width - 6 ft model	1.83 m	6 ft	1.83 m	6 ft
C Height - stowed	3.05 m	10 ft	3.05 m	10 ft
D Length - stowed	14.25 m	46 ft 9 in	14.25 m	46 ft 9 in
Length - transport (jib tucked under)	12.19 m	40 ft	12.19 m	40 ft
E Width - axles retracted	2.49 m	8 ft 2 in	2.49 m	8 ft 2 in
Width - axles extended	3.94 m	12 ft 11 in	3.94 m	12 ft 11 in
F Wheelbase	4.11 m	13 ft 6 in	4.11 m	13 ft 6 in
G Ground clearance - center	38.1 cm	15 in	38.1 cm	15 in

Productivity

Maximum lift capacity - unrestricted	300 kg	660 lb	300 kg	660 lb
- restricted	454 kg	1,000 lb	454 kg	1,000 lb
Platform rotation	160°		160°	
Vertical jib rotation - up/down	135°		135°	
Turntable rotation	360° continuous		360° continuous	
Turntable tailswing - axle retracted	0.56 m	1 ft 10 in	0.56 m	1 ft 10 in
Turntable tailswing - axle extended	1.02 m	3 ft 4 in	1.02 m	3 ft 4 in
Drive speed - stowed	4.9 km/h	3.0 mph	4.9 km/h	3.0 mph
- raised (below 125 ft)	0.6 km/h	0.38 mph	0.6 km/h	0.38 mph
Gradeability - stowed**	40%		40%	
Turning radius - axle retracted: inside	8.03 m	26 ft 4 in	8.03 m	26 ft 4 in
outside	9.96 m	32 ft 8 in	9.96 m	32 ft 8 in
Turning radius - axle extended: inside	2.90 m	9 ft 6 in	2.90 m	9 ft 6 in
outside	6.17 m	20 ft 3 in	6.17 m	20 ft 3 in
Controls	12 V DC proportional		12 V DC proportional	
Tyres - RT foam filled	445D50/710HD		445D50/710HD	

Power

Power source	Deutz TD 2011 L04i turbo diesel 4 cylinder 74 hp (55 kW) Stage IIIA Deutz TCD2.2 L3 turbo diesel 3-cylinder 74hp (55 kW) Stage V			
Auxiliary power unit	12 V DC		12 V DC	
Hydraulic tank capacity	208 L	55 gal	208 L	55 gal
Fuel tank capacity	151 L	40 gal	151 L	40 gal

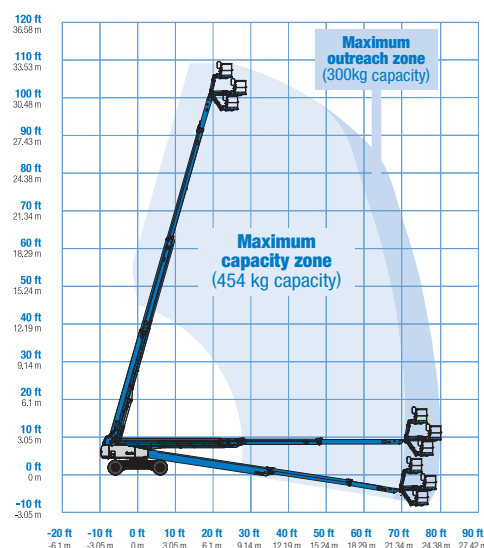
Weight***

4WD	19,300 kg	42,549 lbs	20,700 kg	45,636 lbs
-----	-----------	------------	-----------	------------

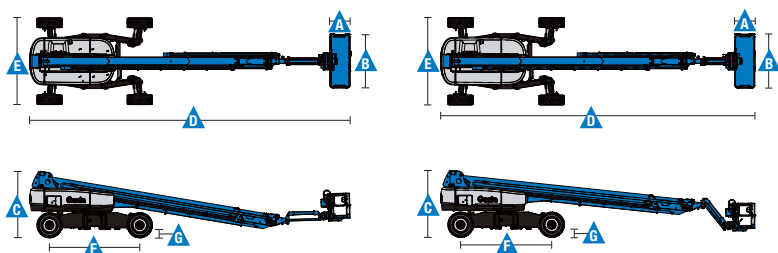
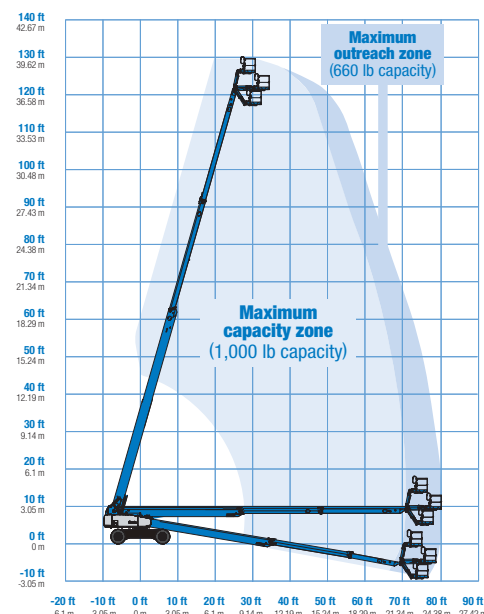
Standards Compliance

EU Directives: 2006/42/EC - Machinery (harmonized standard EN 280:2013+A1:2015); 2004/108/EC (EMC); 2000/14/EC (Outdoor Noise)

Range Of Motion SX-105 XC



Range Of Motion SX-125 XC



* The metric equivalent of working height adds 2 m to platform height. U.S. adds 6 ft to platform height.

** Gradeability applies to driving on slopes. See operator's manual for details regarding slope ratings.

*** Weight will vary depending on options and/or country standards.

Features

Standard Features	Easily Configured To Meet Your Needs	Options & Accessories
Measurements SX-105 XC <ul style="list-style-type: none"> 34 m (111 ft) working height 24.38 m (80 ft) horizontal reach 300 kg (660 lb) unrestricted and 454 kg (1,000 lb) restricted lift capacity SX-125 XC <ul style="list-style-type: none"> 40.10 m (131 ft) working height 24.38 m (80 ft) horizontal reach 300 kg (660 lb) unrestricted and 454 kg (1,000 lb) restricted lift capacity Productivity <ul style="list-style-type: none"> Self-leveling platform 160° hydraulic platform rotation Thumb rocker steering Two work lights on chassis and platform Proportional joystick controls Hydraulic oil cooler Drive enable system Chassis tilt drive function cut-out AC power cord to platform Horn Hour meter Tilt alarm Descent motion & travel alarms Flashing beacon 360° continuous turntable rotation Platform & ground control box covers Positive traction drive Two speed wheel motors Four wheel high angle steer Four steering modes: front, rear, crab and coordinated On board full diagnostics and engine monitoring display Telematics ready connector Lift Connect™ Telematics Lift Guard™ Contact Alarm Lift Tool™ Work Tray Power <ul style="list-style-type: none"> 12 V DC auxiliary power Anti-restart engine protection Auto engine fault shutdown Intake air heater Engine gauge display 	Platform Options <ul style="list-style-type: none"> 2.44 m (8 ft) tri-entry platform with side swing gate (standard) Steel 1.83 m (6 ft) dual-entry platform with side swing gate Jib <ul style="list-style-type: none"> 1.52 m (5 ft) jib Engine Options <ul style="list-style-type: none"> Deutz TD 2011 L04i turbo diesel 4 cylinder 74 hp (55 kW) Stage IIIA Deutz TCD2.2 L3 turbo diesel 3-cylinder 74hp (55 kW) Stage V Drive/Steer <ul style="list-style-type: none"> 4 x 4 (standard) 4 wheel steer (standard) Axles <ul style="list-style-type: none"> Mini XChassis™ extendable axles Tyres <ul style="list-style-type: none"> Rough terrain foam-filled (standard) 	Productivity Options <ul style="list-style-type: none"> Half-mesh platform inserts Platform auxiliary top rail Power to platform: plug, socket, with optional Residual-current Circuit Breaker with Overcurrent protection⁽²⁾ Dual axis joystick steering Biodegradable hydraulic oil Hostile environment kit⁽²⁾ Panel cradle package Track & Trace⁽¹⁾ (GPS unit providing machine location & operating information) Operator Protective Structure⁽³⁾ Genie® Tech Pro™ Link Hand-held Diagnostics Device Power Options <ul style="list-style-type: none"> AC Generator Packages (110V/60 Hz, 110V/50Hz, 240V/50 Hz), 3000 W, hydraulically driven Diesel catalytic scrubber muffler⁽²⁾ Diesel air intake pre-cleaner⁽²⁾ Positive air shutdown system



⁽¹⁾ Includes a first 2 years subscription

⁽²⁾ Factory-fit option only

⁽³⁾ Aftermarket only