

Specifications

Model	Z-60 DC & Z-60 FE	
Measurements	Metric	US
Working height maximum*	20.16 m	65 ft 7 in
Platform height maximum	18.16 m	59 ft 7 in
Horizontal reach maximum	11.15 m	36 ft 7 in
Up and over clearance maximum	7.39 m	24 ft 3 in
Below ground reach	2.46 m	8 ft 1 in
A Platform length - 8 ft / 6 ft model	0.91 m / 0.76 m	3 ft / 2 ft 6 in
B Platform width - 8 ft / 6 ft model	2.44 m / 1.83 m	8 ft / 6 ft
C Height - stowed	2.54 m	8 ft 4 in
Height - transport (jib tucked under)	2.62 m	8 ft 7 in
D Length - stowed	8.15 m	26 ft 9 in
Length - transport (jib tucked under)	6.30 m	20 ft 8 in
E Width	2.49 m	8 ft 2 in
F Wheelbase	2.49 m	8 ft 2 in
G Ground clearance - center	0.33 m	1 ft 1 in

Productivity

Lift capacity	227 kg	500 lbs
Platform rotation	160°	160°
Vertical jib rotation	135°	135°
Turntable rotation	355° non-continuous	
Turntable tailswing - riser up	0.58 m	1 ft 11 in
Turntable tailswing - riser down	0.81 m	2 ft 8 in
Drive speed - stowed	6.44 km/h	4.0 mph
Drive speed - raised**	1.09 km/h	0.68 mph
Gradeability - 4WD - stowed***	45%	45%
Turning radius - inside	2.51 m	8 ft 3 in
Turning radius - outside	5.69 m	18 ft 8 in
Controls	24V DC proportional	
Tyres	355/55D 625	

Power

Drive system	34 V 3-Phase AC	
Power source	48 V DC (eight 6V batteries)	
	390 Ah capacity (FLA standard on DC)	
	415 Ah capacity (AGM standard on FE)	
	24.8 hp (18.5kW) Kubota D1105 Stage V driven AC generator (FE only)	
Auxiliary power unit	12V DC	12V DC
Hydraulic tank capacity	68.14 L	18 gal
Fuel tank capacity	64.35 L	17 gal

Sound & Vibration Levels

Sound pressure level (ground workstation)	70 dBA (DC) / 77 dBA (FE)
Sound pressure level (platform workstation)	70 dBA (DC) / 72 dBA (FE)
Vibration	0.553 m/s ² (1.81 ft/s ²)

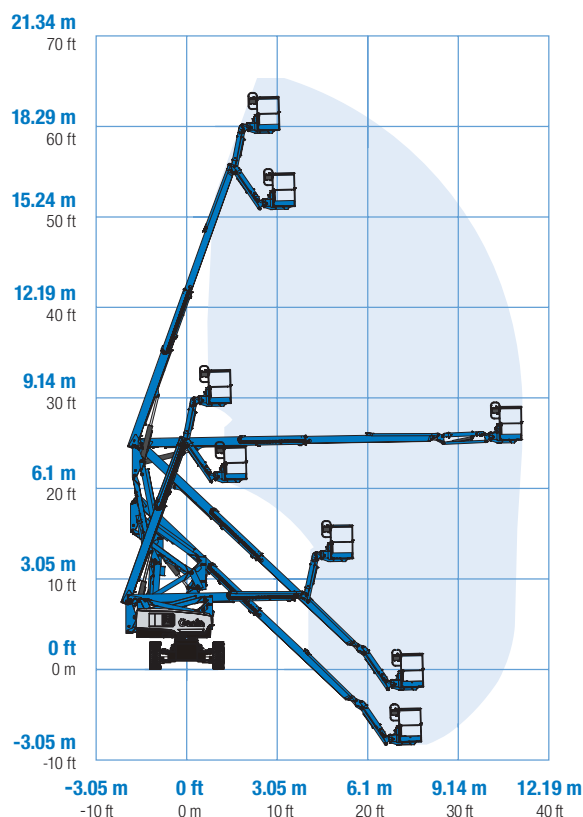
Weight****

Z-60 DC	7,530 kg	16,600 lbs
Z-60 FE	7,756 kg	17,100 lbs

Standards Compliance

EU Directives: 2006/42/EC - Machinery (harmonized standard EN280), European Emissions Regulation (EU) 2016/1628 Stage V; 2004/108/EC (EMC); 2000/14/EC (Outdoor Noise)

Range Of Motion Z-60 DC & Z-60 FE

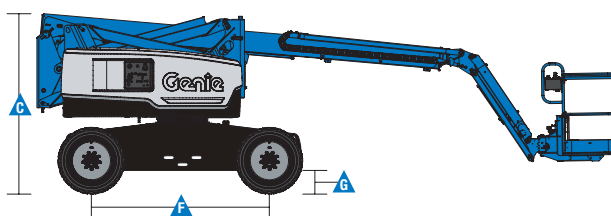
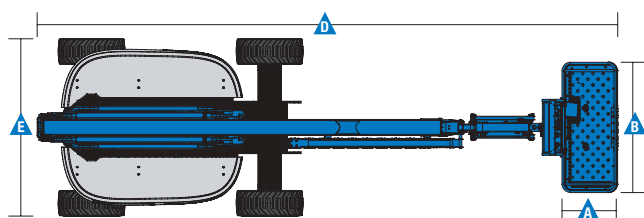


* The metric equivalent of working height adds 2 m to platform height. U.S. adds 6 ft to platform height.

** In lift mode (platform raised), the machine is designed to operate on firm, level surfaces only.

*** Gradeability applies to driving on slopes. See operators manual for details regarding slope ratings.

**** Weight will vary depending on options and/or country standards.



Features

Standard Features	Easily Configured To Meet Your Needs	Options & Accessories
<p>Measurements</p> <ul style="list-style-type: none"> • 20.16 m (65 ft 7 in) working height • 11.15 m (36 ft 7 in) horizontal reach • 7.40 m (24 ft 3 in) up and over clearance • Up to 227 kg (500 lbs) lift capacity <p>Productivity</p> <ul style="list-style-type: none"> • Digital hour meter with battery charge indicator and diagnostic readout • 4 Wheel AC electric drive system • Variable speed high efficiency hydraulic power unit • Self-leveling platform • Hydraulic platform rotation • Proportional joystick controls • Telematics Ready Connector • Thumb rocker steering • Drive enable • Chassis tilt drive function cut-out • AC power cord to platform • Horn • Hour meter • Tilt alarm • Descent & travel alarms • Flashing beacon • 355° non-continuous turntable rotation • Locking turntable covers • Positive traction drive • Dual parallelogram for vertical wall tracking • Lift Guard™ Contact Alarm • Tool Tray <p>Power</p> <ul style="list-style-type: none"> • 48 V DC battery pack (390Ah FLA standard on DC) • 48 V DC battery pack (415Ah AGM standard on FE) • 12V DC auxiliary power • 25A temperature compensated smart charge system • Battery charge indicator • Low battery voltage interrupt 	<p>Platform Options</p> <ul style="list-style-type: none"> • Steel 1.83 m (6 ft) dual entry with side swing gate (standard) • Steel 2.44 m (8 ft) tri entry with side swing gate <p>Jib</p> <ul style="list-style-type: none"> • 1.52 m (5 ft) jib boom with 135° working range <p>Engine (FE only)</p> <ul style="list-style-type: none"> • 18.5 kW (24.8 hp) Kubota Stage V diesel <p>Drive</p> <ul style="list-style-type: none"> • 4WD Electric AC (standard) <p>Axle</p> <ul style="list-style-type: none"> • Active oscillation (standard) <p>Tyre Options</p> <ul style="list-style-type: none"> • Rough terrain non-marking foam filled (standard) • Rough terrain foam-filled 	<p>Productivity Options</p> <ul style="list-style-type: none"> • Lift Guard™ Half mesh platform panels⁽¹⁾ • Platform auxiliary top rail • Air line to platform • Power to platform: plug, socket, with optional Residual-current Circuit Breaker with Overcurrent protection • Work lights package (2 on chassis, 2 on platform)⁽¹⁾ • Dual axis joystick steering⁽¹⁾ • Biodegradable hydraulic oil • Hostile environment kit: cylinder bellows, boom wiper seals platform and ground control box covers⁽¹⁾ • Chassis tilt lift function cut-out (software setting) • Panel cradle package⁽¹⁾ • Lockable platform control box covers • Tow package⁽¹⁾ • Operator Protective Structure⁽²⁾ • Lift Guard™ Fall Arrest Bar⁽²⁾ <p>Power Options</p> <ul style="list-style-type: none"> • 2000W 120V/60Hz, 240V/50Hz or 110V/50Hz power inverter • FLA (flooded lead acid) batteries (standard on DC) • AGM maintenance-free batteries (standard on FE) • Low temperature cut-out module



⁽¹⁾ Factory-fit option only
⁽²⁾ Aftermarket only