

Specifications

Model	SX-180	
Measurements	Metric	US
Working height maximum*	56.86 m	186 ft
Platform height maximum	54.86 m	180 ft
Horizontal reach maximum	24.38 m	80 ft
Below ground reach	0.61 m	2 ft
A Platform length	0.91 m	3 ft
B Platform width	2.44 m	8 ft
C Height - stowed	3.05 m	10 ft
D Length - stowed	16.18 m	53 ft 1 in
Length - transport (jib tucked under)	13 m	42 ft 8 in
E Width - axles retracted	2.49 m	8 ft 2 in
Width - axles extended	5.03 m	16 ft 6 in
F Wheelbase - axles retracted	5.03 m	16 ft 6 in
Wheelbase - axles extended	4.72 m	15 ft 6 in
G Ground clearance - center	0.38 m	1 ft 3 in

Productivity

Lift capacity	340 kg	750 lbs
Platform rotation	160°	160°
Vertical jib rotation	135°	135°
Horizontal jib rotation	60°	60°
Turntable rotation	360° continuous	
Turntable tailswing - axle retracted	1.14 m	3 ft 9 in
Turntable tailswing - axle extended	1.06 m	3 ft 6 in
Drive speed - stowed	4.02 km/h	2.5 mph
Drive speed - out of stowed		
below 38.10 m (125 ft)	0.65 km/h	0.4 mph
above 38.10 m (125 ft)	0.17 km/h	0.1 mph
Gradeability - stowed**	35%	35%
Turning radius - axle retracted: inside	6.28 m	20 ft 7 in
outside	8.56 m	28 ft 1 in
Turning radius - axle extended: inside	3.02 m	9 ft 11 in
outside	7.34 m	24 ft 1 in

Controls	12 V DC proportional	
Tyres	445/65D 22.5 18 ply foam-filled	

Power

Power source	Deutz TD 2011 L04i turbo diesel 4-cylinder 74hp (55kW) Stage IIIA Deutz TCD2.2 L3 turbo diesel 3-cylinder 74hp (55 kW) Stage V	
--------------	---	--

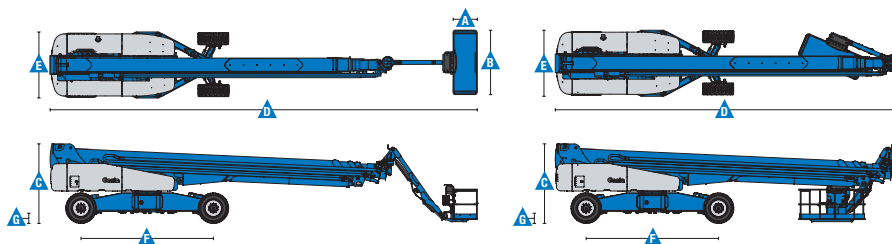
Auxiliary power unit	12 V DC	12 V DC
Hydraulic tank capacity	416 L	110 gal
Fuel tank capacity	189.3 L	50 gal

Weight***

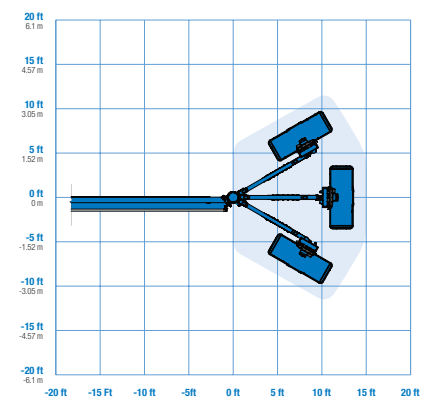
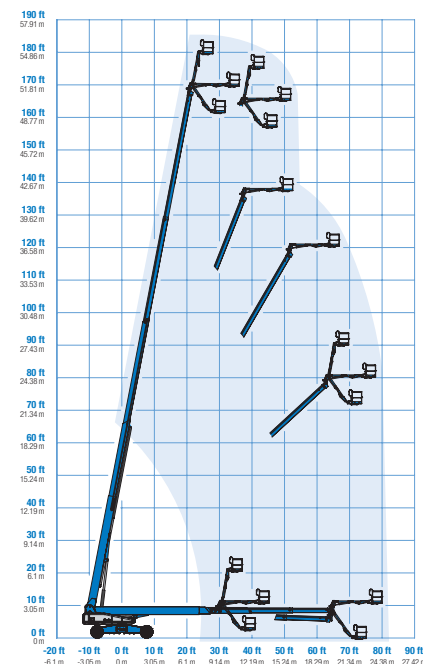
4WD	24,948 kg	55,000 lbs
-----	-----------	------------

Standards Compliance

EU Directives: 2006/42/EC - Machinery
(harmonized standard EN280:2013+A1:2015);
2004/108/EC (EMC);
2000/14/EC (Outdoor Noise)



Range Of Motion SX-180



* The metric equivalent of working height adds 2 m to platform height. U.S. adds 6 ft to platform height.

** Gradeability applies to driving on slopes. See operator's manual for details regarding slope ratings.

*** Weight will vary depending on options and/or country standards.

Features

Standard Features	Easily Configured To Meet Your Needs	Options & Accessories
<p>Measurements</p> <p>SX-180</p> <ul style="list-style-type: none"> • 57 m (186 ft) working height • 24.40 m (80 ft) horizontal reach • 340 kg (750 lb) lift capacity <p>Productivity</p> <ul style="list-style-type: none"> • Self-leveling platform • 160° Hydraulic platform rotation • Proportional joystick controls • Hydraulic oil cooler • Thumb rocker steering • Chassis tilt drive function cut-out • Drive enable system • AC power to platform • Horn • Hour meter • Tilt alarm • Descent alarm • Alarm package • 360° continuous turntable rotation • Positive traction drive • Two speed wheel motors • Four wheel high angle steer • Four steering modes: front, rear, crab and coordinated • Four wheel brakes • Ground control box cover • Welder Ready package • Engine status display • Telematics-Ready Connector • Lift Connect™ Telematics • Lift Guard™ Contact Alarm • Lift Tool™ Work Tray <p>Power</p> <ul style="list-style-type: none"> • All engines are emissions compliant • 7.5 kW generator <ul style="list-style-type: none"> - 415V/240V/50Hz (Europe) - 110V/55V/50Hz (UK) • 12 V DC auxiliary power • Anti-restart engine protection • Auto engine fault shutdown • Intake air heater • Engine gauge display 	<p>Platform</p> <ul style="list-style-type: none"> • 2.44 m (8 ft) tri-entry platform with side swing gate (standard) <p>Jib</p> <ul style="list-style-type: none"> • 3.05 m (10 ft) rotating jib <p>Engine Options</p> <ul style="list-style-type: none"> • Deutz TD 2011 L04i turbo diesel 4-cylinder 74hp (55kW) Stage IIIA • Deutz TCD2.2 L3 turbo diesel 3-cylinder 74hp (55 kW) Stage V <p>Drive/Steer</p> <ul style="list-style-type: none"> • 4 x 4 (standard) • 4 wheel steer (standard) <p>Axles</p> <ul style="list-style-type: none"> • X-Chassis™ extendable axles (standard) <p>Tyres</p> <ul style="list-style-type: none"> • Rough terrain foam-filled (standard) 	<p>Productivity Options</p> <ul style="list-style-type: none"> • Half-mesh platform inserts • Platform auxiliary top rail • Hostile environment package⁽¹⁾ • Dual axis joystick steering • Tool tray • Work lights package (2 on chassis, 2 on platform)⁽¹⁾ • Biodegradable Hydraulic Oil⁽¹⁾ • Airline to Platform⁽¹⁾ • Anemometer • Chassis tilt lift function cut-out • Lockable platform control box covers⁽¹⁾ • Track & Trace⁽²⁾ (GPS unit providing machine location & operating information) • Operator Protective Structure⁽³⁾ • Genie® Tech Pro™ Link Hand-held Diagnostics Device <p>Power Options</p> <ul style="list-style-type: none"> • AC generator packages, both 7,5 kW (120V/50Hz with dual sockets in platform - 240-415V/50Hz 3 phase with 5 pole 3 phase socket and 240V socket) • Cold Weather Packages⁽¹⁾ • Diesel scrubber/spark arrestor muffler (catalytic muffler), Stage IIIA engine only⁽¹⁾ • Intake air pre-cleaner⁽¹⁾ • Positive air shutdown system



⁽¹⁾ Factory-fit option only

⁽²⁾ Includes a first 2 years subscription

⁽³⁾ Aftermarket only