

Specifications*

MEASUREMENTS	Metric
Working height, max.	19,20 m
Horizontal outreach with 250 kg	13,50 m
Up and Over Clearance, max.	14,50 m
Platform height (A)	1,10 m
Platform length (B)	1,20 m
Platform width (C)	0,80 m
Length, overall (D)	6,00 m
Length without basket (E)	6,00 m
Height, travelling position (F)	1,99 m
Width, min. (G)	0,99 m
Ground clearance, max. (H)	0,42 m
Track (L x W) (I)	1,45 m x 0,20 m
Length outrigger footprint standard (J)	4,70 m
Width outrigger footprint standard (K)	4,70 m
Length footprint one side narrow (L)	6,30 m
Width footprint one side narrow (M)	3,65 m
Width footprint both sides narrow (N)	2,65 m
Outrigger plate Ø	0,18 m

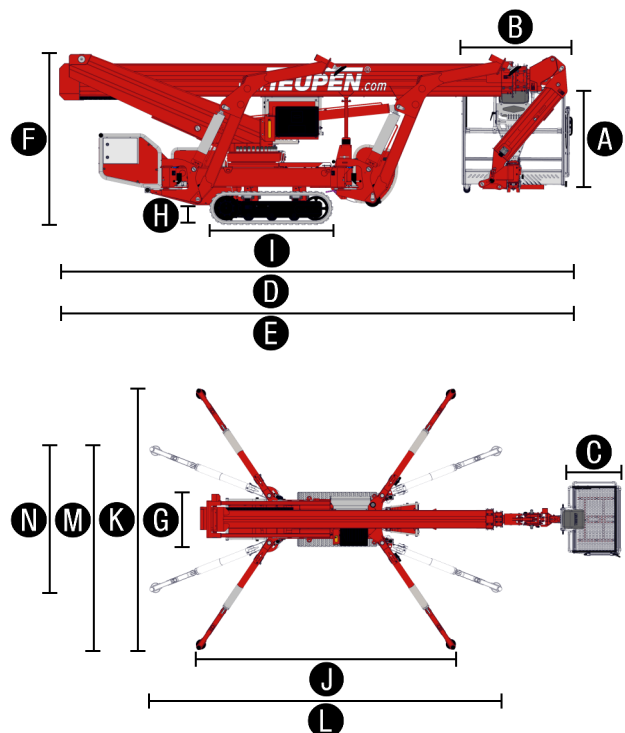
PRODUCTIVITY	Metric
Basket capacity	250 kg
Movable Jib	180°
Basket rotation	180°
Turret rotation	450°
To be jacked up on ground slope of	16,7°/30,0 %
Height and width track adjustment	19/46 cm
Gradeability, max.	16,7°/30,0 %
Slope angle	19,0°/34,0 %
Travel speed	4,0 km/h

WEIGHT	Metric
Total weight	2980 kg
Live load in travelling position	4,64 kN/m² ohne Korb / 4,2 kN/m² mit Korb
Live load in working position	1,57 kN/m²
Point load per outrigger plate, max.	23,70 kN*

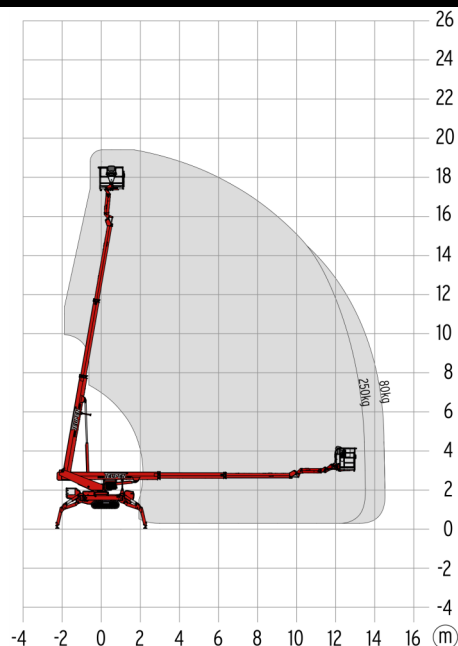
POWER	
Standard power sources (Electric and combustion engine)	1) Electric: 230 V, 12,9 A, 2,2 kW 2) Diesel: Kubota Z 602 (10,8 kW/14,7 PS)
Fuel tank petrol/Diesel engine	25,0 l

* preliminary

LEO¹⁹T REDLINE



WORKING ENVELOPE



STANDARDS COMPLIANCE



EN ISO 9001



Product specifications are subject to change without notice or obligation. Photographs and drawings in this document are for illustrative purposes only. Refer to the appropriate Operator's Manual for instructions on the proper use of this equipment. Failure to follow the appropriate Operator's Manual when using our equipment or to otherwise act irresponsibly may result in serious injury or death. The only warranty applicable to our equipment is the standard written warranty applicable to the particular product and sale and we make no other warranty, expressed or implied. Products and services listed may be trademarks, service marks or trade-names of Teupen Maschinenbau GmbH and/or its subsidiaries in the U.S.A. and many other countries. "Teupen", "Access redefined" and "LEO Series" are registered Trademarks of Teupen GmbH in the United States of America and many other countries. Version 2015-B © 2015 Teupen Maschinenbau GmbH.

Features*

TRACK CHASSIS

- Powerful track drive with hydraulic braking system
- Precise maneuvering over sensitive electrohydraulic cable remote control
- White, non-marking rubber tracks with specially arranged profile providing optimum grip
- Hydraulically height- und width-adjustable track chassis

STABILISATION

- Fully-hydraulic, automatic levelling system with outrigger setup monitoring
- Variable outrigger system with one-side or both-sides narrow setup option
- Wear resistant, anti-friction PVC outrigger feet

BOOM SYSTEM

- Telescopic boom made of specially welded and shaped high-strength steel
- All functions are available from the radio remote control set
- Electric-proportional controls with intuitive operator guidance
- Robust, lockable control panel with integrated operation and display function
- Self-levelling platform with full eletro-hydraulic levelling system
- Center-mounted, 180° turnable basket for extra flexibility
- Boom rotation via high-performance slew ring, worm gear and hydraulic motor
- Resting support system prevents incorrect positioning of boom in transport bracket

POWER SOURCES

- 230 V (EU) electric motor for indoor applications
- Kubota Diesel engine Z602 (10,8 kW/14,7 PS) in lieu of petrol engine
- Start-Stop switch of combustion engine in the basket

PRODUCTIVITY, SAFETY, QUALITY

- Hydraulic emergency lowering system over electric pump
- 230 V / 16 A (EU) double power outlet in the basket
- Ergonomically shaped basket from high-strength ITEM aluminium profiles
- Lockable storage box for cable remote control
- Cables and hoses are safely routed through the boom structure
- Biodegradable hydraulic oil
- Lock valves - hydraulic return valves directly on all hydraulic cylinders
- Relief valves protecting the hydraulic system from too high pressures
- Protective covers for oil-tank, emergency controls and connecting cables and hoses
- Easily removable covers for optimal accessibility
- Hour meter
- Fuzzy IV control technology

*preliminary



REDLINE EDITION

- Kubota Diesel engine Z602 (10,8 kW) instead of petrol engine
- Hydraulically height- and width-adjustable track chassis instead of the mechanically adjustable track chassis.
- Treecare package, consisting of:
 - Protective cover over electronic control box
 - Covers on piston rod outrigger cylinders
 - Covers over Hydraulic- and fuel tanks
- Coming Home & Memory Function - automatic return of boom into transport position and memorising any given point in the working diagram to return to.
- Automatic boom function cut off by a monitoring system of the access stair locking system.
- High-quality paint in RAL 3020 (red)
- Display below on the turret assembly
- 4 outrigger/sliding pads (700 x 220 x 60 mm)

OPTIONS

- Custom paintwork, one colour, according to RAL scheme (except metallic coatings, signal- or special colors)
- Custom paintwork, two colours, according to RAL scheme (except metallic coatings, signal- or special colors)

ACCESSORIES

- Track mat (2000 x 800 x 15 mm) fits exactly into transport frame
- 2 protective track covers, made of high-quality polypropylene fabric
- Lifting device (300 kg load capacity). This option can only be ordered in combination with the automatic boom function cutt off.
- 2 headlights on engine unit (only with combustiion engine)
- Safety harness

TRAILERS OR TRANSPORT FRAMES

- Subframe for truck Mitsubishi Canter (Total weight: 450 kg)

Enquiries from Europe, Asia, Middle East & Africa:

Corporate Headquarters

Teupen Maschinenbau GmbH
Marie-Curie-Str. 13
48599 Gronau, Germany
phone +49 2562 8161-0
fax +49 2562 8161-888
mail@teupen.com
www.teupen.com

Enquiries from North- & South America:

US office

Teupen USA, Inc.
10701 Southern Loop Blvd.
Pineville, NC 28134, USA
phone (704) 248-9871
fax (704) 248-9889
infousa@teupen.com
www.teupen-usa.com